



ENVIRO - STAR

With the Enviro Star 800 Series we are pleased to provide a breakthrough product which offers a myriad of glass and structural options to seamlessly blend with any décor while providing exceptional energy efficiency.

The real secret of this window's performance is its exceptionally low air infiltration ratings which can lower the energy consumption of a typical home by 25 – 40%. This unique feature, combined with our Deluxe Energy Package or Triple Pane Glass Package, offers superior thermal performance and exceeds the most rigorous Energy Star Requirements.

With the 800 Series Enviro Star window, we are pleased to provide a classically refined traditional wood window look without most of the maintenance and responsibilities which makes this window a sophisticated choice.



ENVIRO-STAR





- Full 3 1/4" Depth Welded Mainframe. The elegant, beveled profile of our 800 Series will enhance the beauty of your home's exterior by giving it the traditional look and feel of wood windows with the performance and ease of maintenance you can only get with vinyl windows. The 800 Series can also be painted to match any exterior. (1)
- Heatseal® warm edge spacer system is used for excellent thermal efficiency and drastic reduction in the possibility of condensation on the inside of the window.
- Full integral interlock with double weather-stripping.
- Constructed to represent a traditional wood window style. The smallest details, such as the rounded beveled edges of the glazing bead, are a nod to the classic. (2)
- A variety of hardware options fits harmoniously into any décor. (3)
- Vent latches allow for ventilation with an added measure of security while you are at home. Both sashes can remain partially open and the latches help prevent the window from being opened more than five inches. (4)





The slider window is a popular style for today's homes. Enviro-Star Sliding Windows combines a sleek design for more glass viewing area and exceptional performance.

Features delivering exceptional wind and water resistance

- Fusion welded sash and frame corners for excellent performance.
- Double weather-strip system around sliding sash for enhanced performance and reduced air infiltration.
- Double weather-stripped interlock design for improved sealing performance.
- Sloped sill for enhanced drainage performance.

Features delivering exceptional insulating performance

- Multi-chamber design that buffers interior and exterior temperatures.
- Double weather-strip system around sliding sash for enhanced performance and reduced air infiltration.
- Double weather-stripped interlock design for excellent insulating performance.
- Heatseal® Warm Edge Spacer System for excellent thermal efficiency and drastic reduction of the possibility of condensation on the inside of the window.

Added features of the Sliding Window System

- Dual heavy duty cam lock & keeper on windows over 24 inches high for added security. (1)
- The slider features a handle style based on traditional wood windows. (2)
- Standard factory-installed bumpers ensure quiet operation. (3)
- Brass wheels allow the slider to smoothly glide across its track. (4)



OKNA Windows offers three beautiful internal laminates in addition to the standard Euro-White to give your home a distinct look and enhance its curb appeal. You can also special order custom exterior colors from a virtually unlimited selection of paints. Our paints are environmentally safe and durable, giving your exterior a vibrant and long-lasting color finish.

Interior Options



STANDARD EURO-WHITE FINISH AND
STANDARD EURO-WHITE LOCK



OPTIONAL COGNAC FINISH (LAMINATE)
AND OPTIONAL BRUSHED NICKEL LOCK

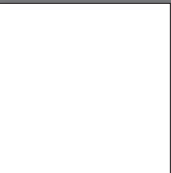


OPTIONAL MELROSE CHERRY FINISH (LAMINATE)
AND OPTIONAL ANTIQUE BRASS LOCK



OPTIONAL NATURAL FINISH (LAMINATE)
AND OPTIONAL BRUSHED NICKEL LOCK

Exterior Colors



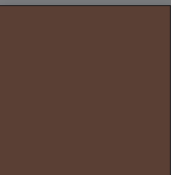
EURO - WHITE



ALMOND



COCOA



BRONZE



All colors except Euro-White are available at an additional charge.

Printed colors may not match the product's actual color. Please visit a local dealer to view actual color samples.

Hardware Finishes

To create a style and finish that reflects your unique taste our hardware is designed to harmonize with our different window styles and decor ideas.



EURO - WHITE



ALMOND



COCOA



BRUSHED NICKEL



ANTIQUÉ BRASS



ADOBE GRAY

STANDARD ON LAMINATES

Printed colors may not match the product's actual color. Please visit a local dealer to view actual color samples.



Factory-installed half screen with heavy-duty handle.



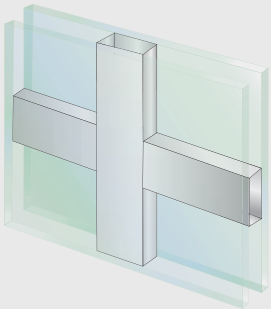
Optional locking screen provides an additional safety measure.*

** Insect screen cannot support significant amounts of weight. Please keep small children and pets away from windows.*

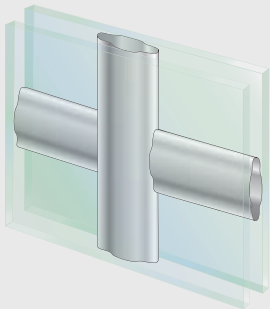
GRIDS

Looking for a stunning design to instantly set your home apart both inside and out. A choice of decorative grids can highlight the architectural style that speaks to you.

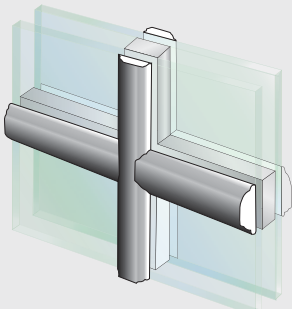
GBG (Grids between glass) consist of aluminum bars sealed in the insulating airspace between the two panes of glass. Because the interior and exterior glass surfaces are not affected, cleaning your windows is a much easier task. GBG grids on two tone windows are available with matching interior and exterior colors.



Flat Grids between glass



Contour Grids between glass

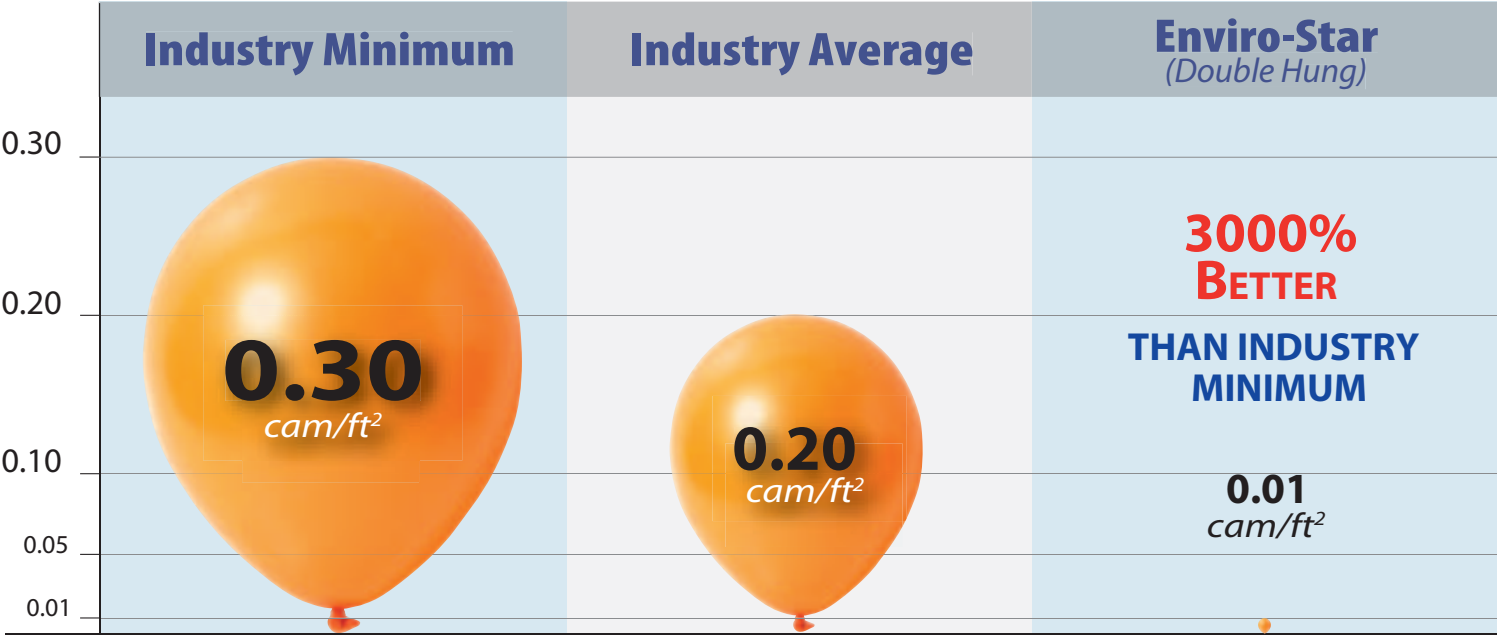


Simulated Divided Light (SDL)
Permanent interior and exterior grids will provide a truly authentic look. Interior grids are available in a Euro-White color or Wood Laminate. External grids are available in Euro-White or colors to match products exterior.

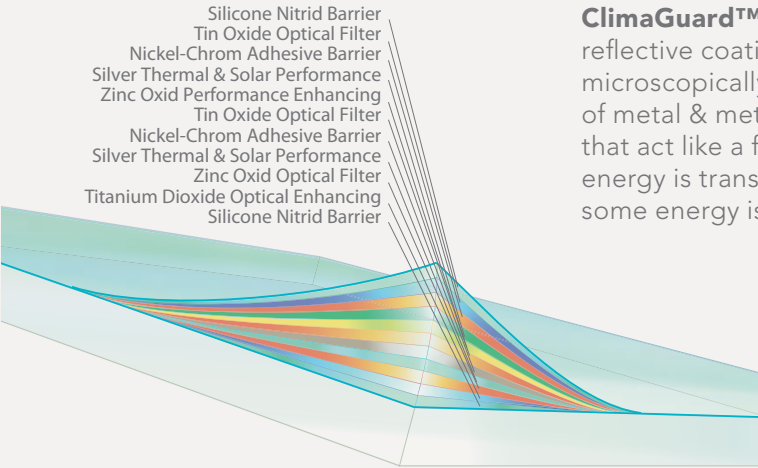
Air infiltration/drafts is a term used to describe the air leaking into or out of you home through the window frames.

*“Reduced air infiltration combined with proper ventilation can not only reduce your energy bills but it can also improve the quality of your indoor air. Outdoor air that leaks indoors makes it difficult to maintain comfort and energy efficiency. In addition, air leakage accounts for 25–40% of the energy used for heating and cooling in a typical home.”**

THE GRAPH SHOWS THE AMOUNT OF AIR IN CUBIC FEET THAT MAY COME THROUGH THE WINDOW AT SPEEDS OF 25MPH. **



**The results are based on a tested window sample by AAMA testing window guidelines. Title of Test & Method: Air Infiltration - ASTM E 283 75 PA - (1.6 psf) 25 mph
* US Department of Energy • www.energystar.gov/index.cfm?c=new_homes_features.hm_f_reduced_air_infiltration



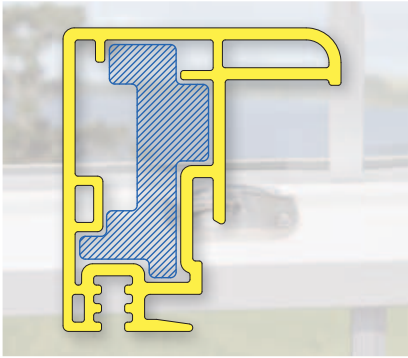
ClimaGuard™ is a trademark of Guardian Industries Corp.

ClimaGuard™ heat reflective coatings are microscopically thin layers of metal & metal oxide that act like a filter – some energy is transmitted, some energy is reflected.

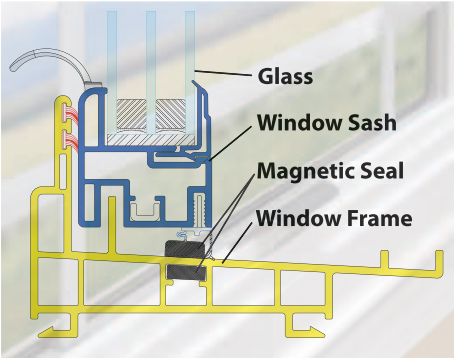


ClimaGuard™ heat reflective coating

GREAT ENGINEERING – IMPRESSIVE RESULTS



Magnetic Seals (shown in light blue), similar to those used in refrigerators, eliminate drafts and greatly improve the thermal performance of our windows.



Additional high density composite stiffener (shown in blue) inside the upper part of the sash makes our windows structurally stronger than other windows available on the market.

BALANCE SYSTEM

(Values based on Double Hung Windows)



Constant Force



POWERLIFT (Block-and-Tackle) balance system used in our windows can achieve life cycles as high as 28,000 cycles. Constant Force commonly used by other window manufacturers only achieves 5,000 cycles.*

*Based on test performed by BSL

STRUCTURAL PERFORMANCE (DOUBLE HUNG)

	800 Series	Industry Minimum	Comparison to Industry Minimum
AAMA RATING (40x63)	R 60	R15	
AIR INFILTRATION (cam/ft2)	0.01	0.3	3000% Better
WATER PENETRATION (mph)	59	33	79% Better
STRUCTURAL INTEGRITY (mph)	187	94	99% Better

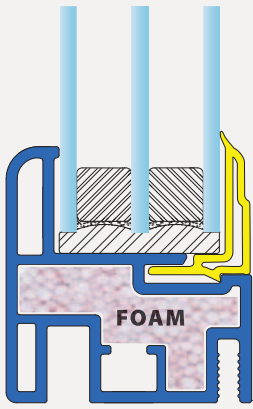
The results are based on a tested window sample by AAMA testing window guidelines. Title of Test & Method: Air Infiltration - ASTM E 283 75 PA - (1.6 psf) 25 mph

DELUXE PACKAGE:

- Energy Saving Package
- Foam Filled Insulated Extrusions
- Locking Screen



Insulation type may vary during the manufacturing process



TRIPLE PANE GLASS PACKAGE

(Double Hung)

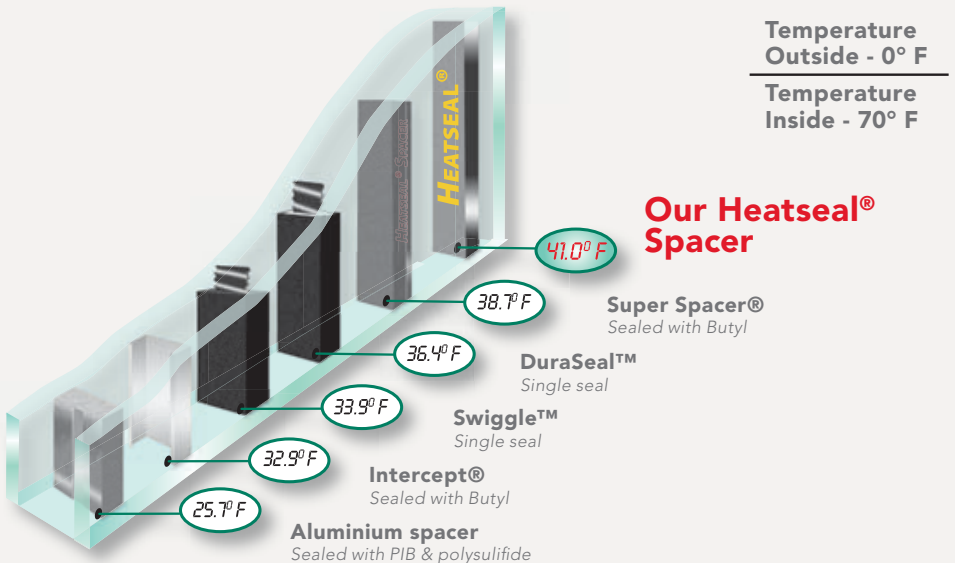
with Deluxe Package offers **33% better U-value** than Energy Star Requirements

Based on .30 U-Value which is the new Energy Star requirements for the Northern Region.

Our Heatseal® Spacer gives your home excellent thermal efficiency and drastic reduction of condensation.

As much as 15.3 F warmer seal temperature at sightline.

Super Spacer® is a registered trademark of Edgetech I.G., Inc./ • Intercept® is a registered trademark of PPG Industries, Inc.DuraSeal is a registered trademark of TruSeal Technologies, Inc. • Swiggle is a registered trademark of TruSeal Technologies, Inc. Simulation performed by Enermodal engineering, Ltd. using Window 5.2. All air spaces are 0.562" wide 0.033 emittance low-E glass.



THERMAL PERFORMANCE (DOUBLE HUNG)

Energy Saving Glass Double Pane Argon Gas



Deluxe Package Double Pane Argon Gas



Deluxe Package Triple Pane Argon Gas



All results numbers are based on tested window sample by NFRC and AAMA testing window guidelines. Use for comparison purposes only. Actual values may vary depending on installation, size of the window, and other conditions. All illustrations, photographs, and specifications in this publication are based on the latest product information available at the time of printing. Some windows shown with optional features. See the actual product for complete accuracy. The manufacturer reserves the right to alter or discontinue any model or specification without notice.

Its Easy To See Why So Many People Are Insisting On Enviro-Star



Our classically refined 800 Series windows offer a traditional wood window look without the wood window maintenance responsibilities. A streamlined design, packed with a variety of features, make the 800 Series a sophisticated choice.



5601 Beaver Dam Road
Bristol, PA 19007
(215) 788-7000
(215) 781-1166 (fax)
www.oknawindows.com

