

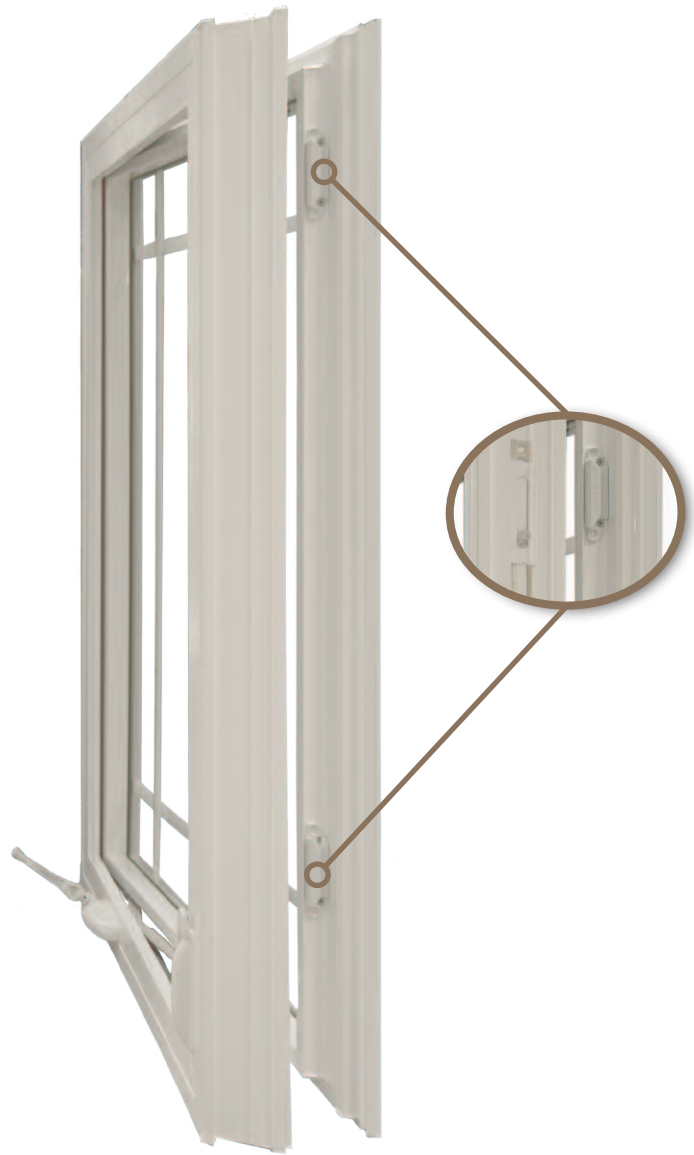


# Casement

700 Series



# INNOVATIONS



A PROGRESSIVE MULTI-POINT LOCKING SYSTEM allows for a weather-tight seal by drawing the sash firmly and securely to the master frame. The multi-point locking system also offers added security by providing additional points of reinforcement on the window.



## Awning - 750 Series

The awning offers a streamlined look in a window which is practical in areas with obstructions. It cranks out smoothly for air circulation while protecting your home from the elements.

## INTERIOR & HARDWARE OPTIONS



*Euro-White Finish  
Euro-White Lock  
(Standard)*



*Almond Finish  
Almond Lock  
(Optional)*



*Cocoa Finish  
Cocoa Lock  
(Optional)*



*Melrose Cherry Finish  
Antique Brass Lock  
(Optional)*

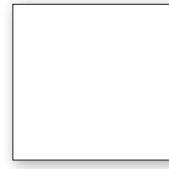


*Cognac Finish  
Brushed Nickel Lock  
(Optional)*



*Natural Finish  
Brushed Nickel Lock  
(Optional)*

## EXTERIOR OPTIONS



EURO-WHITE



ALMOND



COCOA



BRONZE



*OKNA Windows offers three exterior color selections in addition to the standard Euro-White option to give your home a distinct look and enhance its curb appeal.*

*You can also special order custom exterior colors from a virtually unlimited selection of paints. Our paints are environmentally safe and durable, giving your exterior a vibrant and long-lasting color finish.*

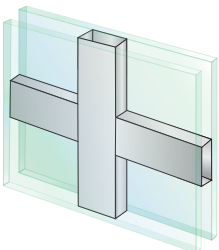
*All finishes except Euro-White are available at an additional charge.*

*Printed colors may not match the product's actual color. Please visit a local dealer to view actual color samples.*

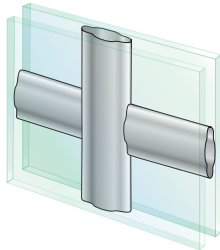
*Looking for a stunning design to instantly set your home apart both inside and out. A choice of decorative grids can highlight the architectural style that speaks to you.*

**GBG** (Grids between glass) consist of aluminum bars sealed in the insulating airspace between the two panes of glass. Because the interior and exterior glass surfaces are not affected, cleaning your windows is a much easier task. **GBG** grids on two tone windows are available with matching interior and exterior colors.

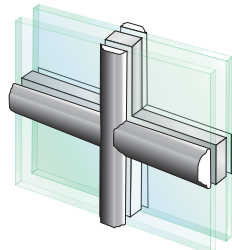
## GRIDS



**Flat Grids  
between glass**



**Contour Grids  
between glass**



### **Simulated Divided Light (SLD)**

*Permanent interior and exterior grids will provide a truly authentic look. Interior grids are available in a Euro-White color or Wood Laminate. External grids are available in Euro-White or colors to match products exterior.*



# FOCUS ON ENERGY SAVINGS

## REFLECTING GLASS

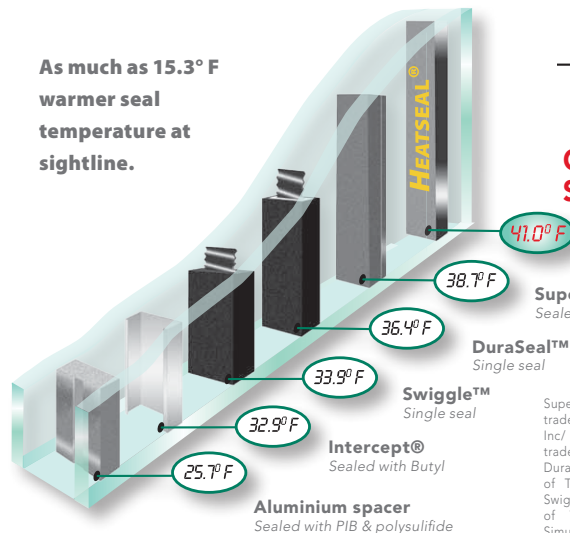
ClimaGuard™ heat reflective coatings are microscopically thin layers of metal & metal oxide that act like a filter – some energy is transmitted, some energy is reflected.

Silicone Nitrid Barrier  
Tin Oxide Optical Filter  
Nickel-Chrom Adhesive Barrier  
Silver Thermal & Solar Performance  
Zinc Oxid Performance Enhancing  
Tin Oxide Optical Filter  
Nickel-Chrom Adhesive Barrier  
Silver Thermal & Solar Performance  
Zinc Oxid Optical Filter  
Titanium Dioxide Optical Enhancing  
Silicone Nitrid Barrier

## THE SPACER

Our Heatseal Spacer gives your home excellent thermal efficiency and drastic reduction of condensation.

As much as 15.3° F warmer seal temperature at sightline.



Super Spacer® is a registered trademark of Edgetech I.G., Inc/ • Intercept® is a registered trademark of PPG Industries, Inc. DuraSeal is a registered trademark of TruSeal Technologies, Inc. • Swiggle is a registered trademark of TruSeal Technologies, Inc. Simulation performed by Enermodal engineering, Ltd. using Window 5.2. All air spaces are 0.562" wide 0.033 emittance low-E glass.

ClimaGuard is a trademark of Guardian Industries Corp.

## ENERGY SAVING PACKAGES

### DELUXE PACKAGE

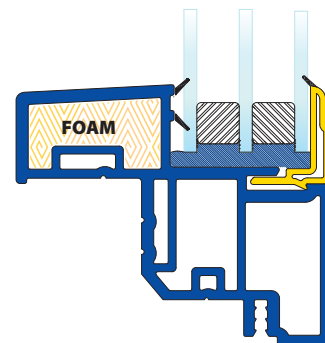
- Energy Saving Package
- Foam-filled insulated extrusions



### TRIPLE PANE GLASS PACKAGE

with Deluxe Package and optional krypton gas offers

47% better U-Value



than New Energy Star Requirements for Northern Zone\*

\* Effective January 4, 2010 the minimum U-Value for ENERGY STAR in the Northern Region has been revised from of 0.35 to 0.30.

## TOP PERFORMERS

ENERGY SAVING GLASS  
DOUBLE PANE  
ARGON GAS



DELUXE PACKAGE  
DOUBLE PANE  
ARGON GAS



DELUXE PACKAGE  
TRIPLE PANE  
ARGON GAS



DELUXE PACKAGE  
TRIPLE PANE  
KRYPTON GAS



All results numbers are based on tested window sample by NFRC and AAMA testing window guidelines. Use for comparison purposes only. Actual values may vary depending on installation, size of the window, and other conditions.

All illustrations, photographs, and specifications in this publication are based on the latest product information available at the time of printing. Some windows shown with optional features. See the actual product for complete accuracy. The manufacturer reserves the right to alter or discontinue any model or specification without notice.



5601 Beaver Dam Road  
Bristol, PA 19007  
(215) 788-7000  
(215) 781-1166 (fax)  
www.oknawindows.com



02/2011